

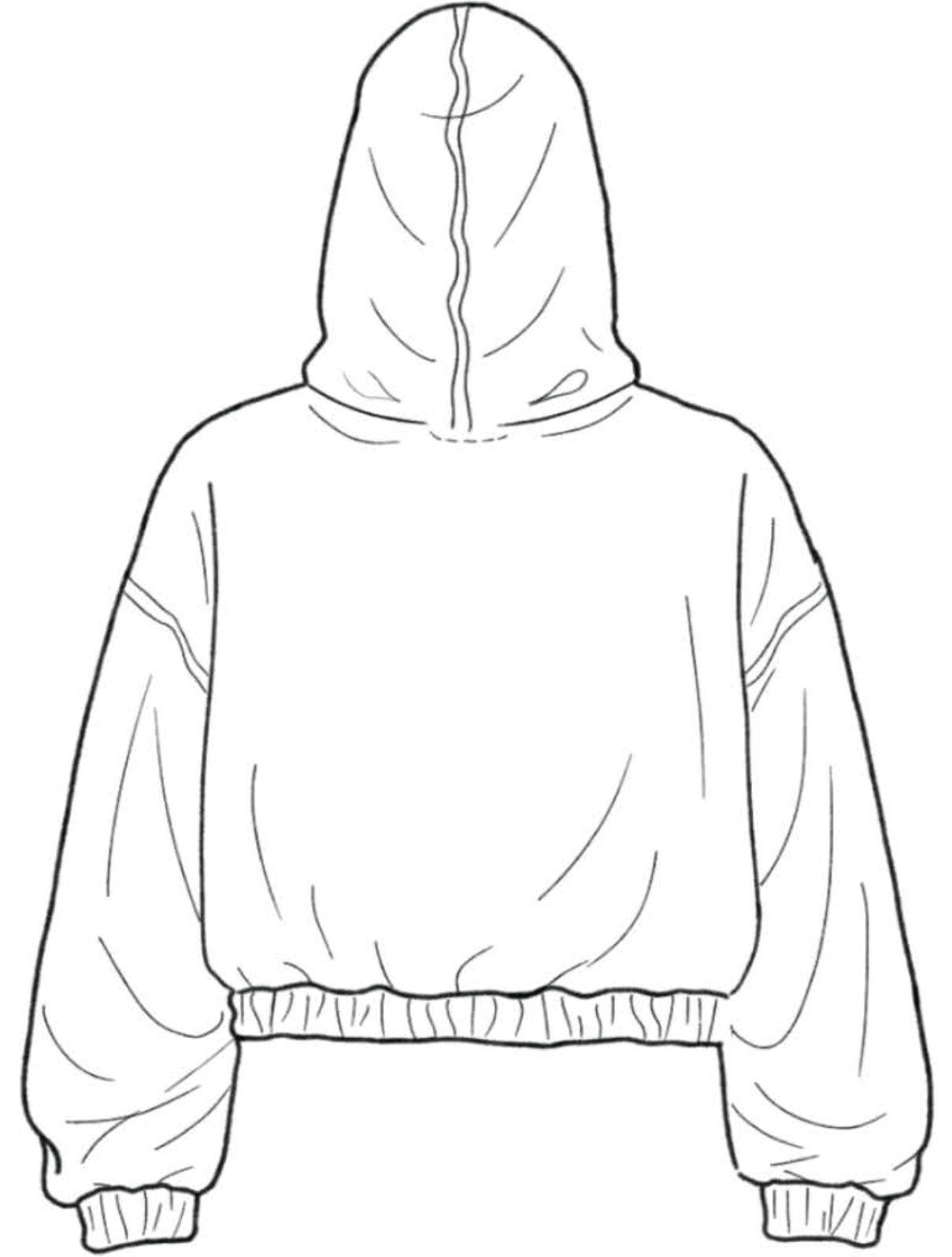


# TECHNICAL FLATS & SPECIFICATION

CROPPED UTILITY JACKET

OJASWINI GUPTA

# HAND-DRAWN FLOATS



# ILLUSTRATOR FLATS

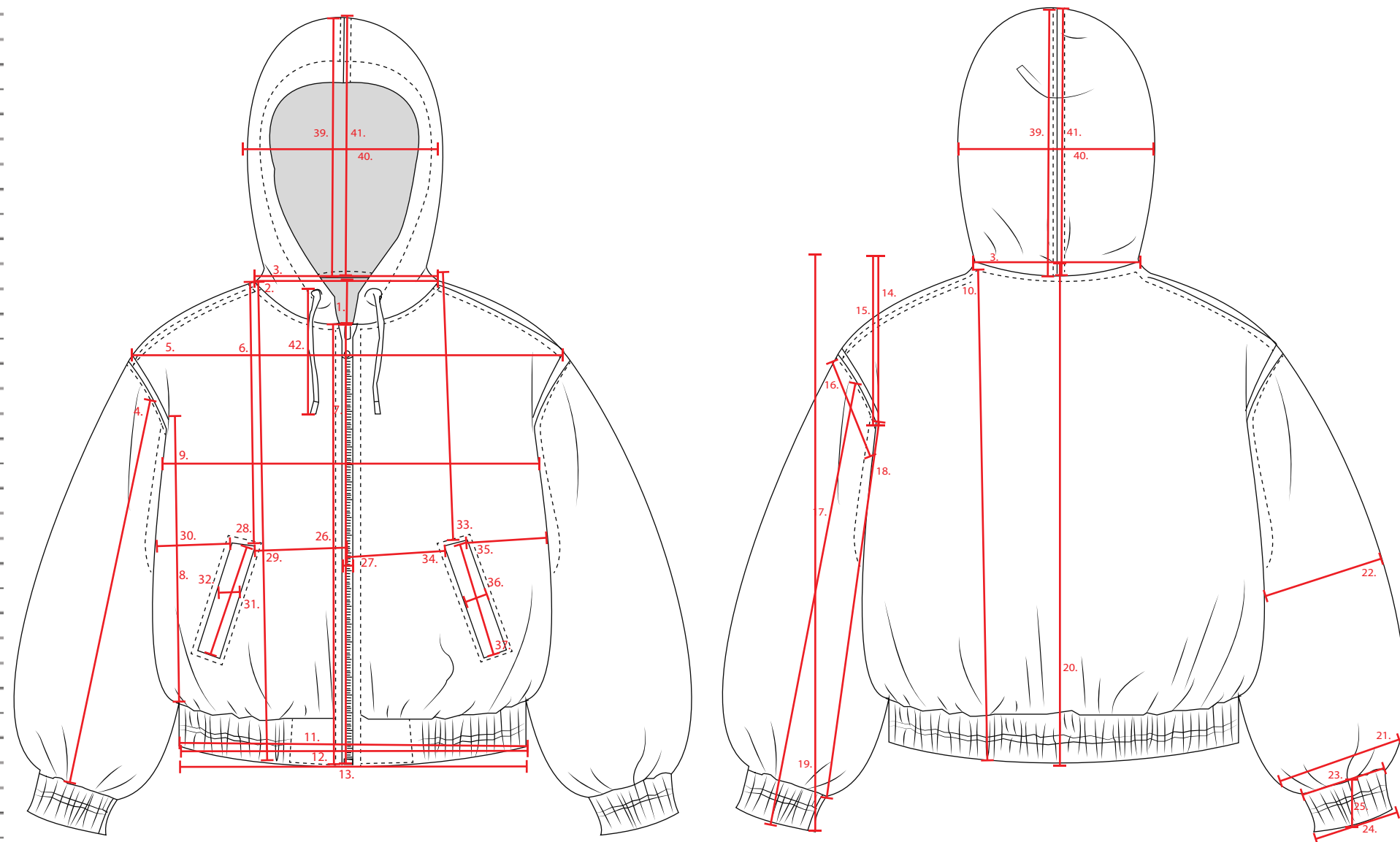
<b>NAME:</b>	<b>BOMBER JACKET</b>	<b>DATE:</b>	<b>4/21/2026</b>
<b>STYLE #:</b>	<b>2</b>	<b>SIZE:</b>	<b>M</b>
<b>SEASON:</b>	<b>SPRING 2026</b>	<b>DESIGNER:</b>	<b>OJASWINI GUPTA</b>
<b>FABRICATION:</b>	<b>Mid-weight woven cotton twill (peach finish / enzyme washed look)</b>	<b>COLOR</b>	<b>Sand / Khaki beige</b>
<b>DESCRIPTION:</b>	<b>Relaxed fit hooded bomber with CF zipper, elastic hem/cuffs, hood with drawcord, front welt pockets, back seam detailing, cotton twill construction</b>	<b>TRIM:</b>	<b>CF zipper, elastic hem &amp; cuffs, hood drawcord, woven label, topstitch thread</b>
<b>Garment</b>			



# SPEC SHEET

<b>NAME:</b>	<b>BOMBER JACKET</b>	<b>DATE:</b>	<b>4/21/2026</b>
<b>STYLE #:</b>	<b>2</b>	<b>SIZE:</b>	<b>M</b>
<b>SEASON:</b>	<b>SPRING 2026</b>	<b>DESIGNER:</b>	<b>OJASWINI GUPTA</b>
<b>FABRICATION:</b>	<b>Mid-weight woven cotton twill (peach finish / enzyme washed look)</b>	<b>COLOR:</b>	<b>Sand / Khaki beige</b>
<b>DESCRIPTION:</b>	<b>Relaxed fit hooded bomber with CF zipper, elastic hem/cuffs, hood with drawcord, front welt pockets, back seam detailing, cotton twill construction</b>	<b>TRIM:</b>	<b>CF zipper, elastic hem &amp; cuffs, hood drawcord, woven label, topstitch thread</b>
<b>Garment</b>			

MEASUREMENTS	FRONT	BACK	TOTAL	COMMENTS
1 NECK DROP	3.5"	1.5"		shallow neck, hooded
2 NECK WIDTH	7"	7"		measured seam to seam
3 NECK CIRCUMFERENCE			21"	incl. hood attachment
4 SHOULDER LENGTH	7"	7"		
5 ACROSS SHOULDER		21"		
6 LENGTH - HPS	25"	25"		
7 LENGTH - CF/CB	25"	25"		
8 LENGTH - SIDE	15"	15"		
9 ACROSS CHEST	25"			1" below armhole
10 HPS TO WAIST	17.5"	17.5"		
11 ACROSS WAIST	24"			
12 BOTTOM EDGE OPENING - RELAXED	19"			elastic
13 BOTTOM EDGE OPENING - EXTENDED	28"			stretched
14 HPS TO UNDERARM	10.5"	10.5"		
15 HPS TO SLEEVE SEAM	10.5"	10.5"		
16 ARMHOLE CIRCUMFERENCE			23"	
17 SLEEVE LENGTH - OVERARM	24"	24"		
18 SLEEVE LENGTH - UNDERARM	19"	19"		
19 SLEEVE LENGTH - CB		33"		
20 SLEEVE LENGTH - HPS	24"	24"		
21 UPPER SLEEVE WIDTH @ FOLD	10.5"	10.5"		
22 ELBOW @ FOLD	9.5"	9.5"		
23 SLEEVE CUFF OPENING - RELAXED	4.5"	4.5"		elastic
24 SLEEVE CUFF OPENING - EXTENDED	7.5"	7.5"		
25 CUFF HEIGHT	2.25"	2.25"		
26 FRONT PLACKET LENGTH	23"			zipper
27 FRONT PLACKET WIDTH	1"			
28 POCKET 1 - HPS TO TOP EDGE	19"			
29 POCKET 1 - CF TO EDGE (TOP/BOTTOM)	4.5"			
30 POCKET 1 - SIDE SEAM TO EDGE (TOP/BOTTOM)	2.5"			
31 POCKET 1 - WIDTH	6"			welt
32 POCKET 1 - LENGTH	1.25"			
33 POCKET 2 - HPS TO TOP EDGE	19"			
34 POCKET 2 - CF TO EDGE (TOP/BOTTOM)	4.5"			
35 POCKET 2 - SIDE SEAM TO EDGE (TOP/BOTTOM)	2.5"			
36 POCKET 2 - WIDTH	6"			
37 POCKET 2 - LENGTH	1.25"			
38 HPS TO YOKE		8.5"		back seam
39 HOOD HEIGHT	15"	15"		
40 HOOD DEPTH	10.5"	10.5"		
41 HOOD CENTER PANEL			3.5"	
42 DRAWCORD TUNNEL - HOOD	1"	1"		

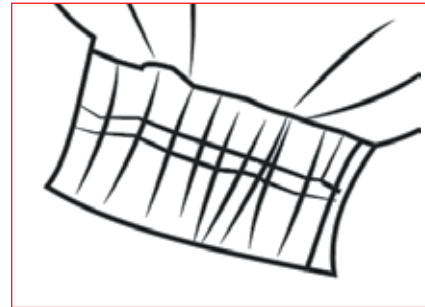
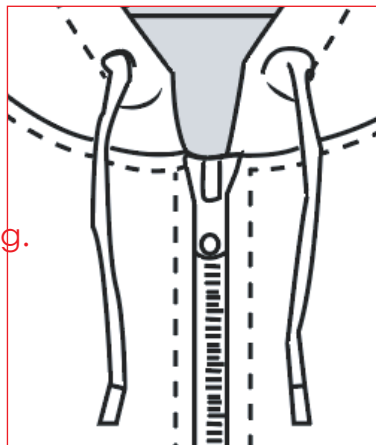


# BILL OF MATERIALS

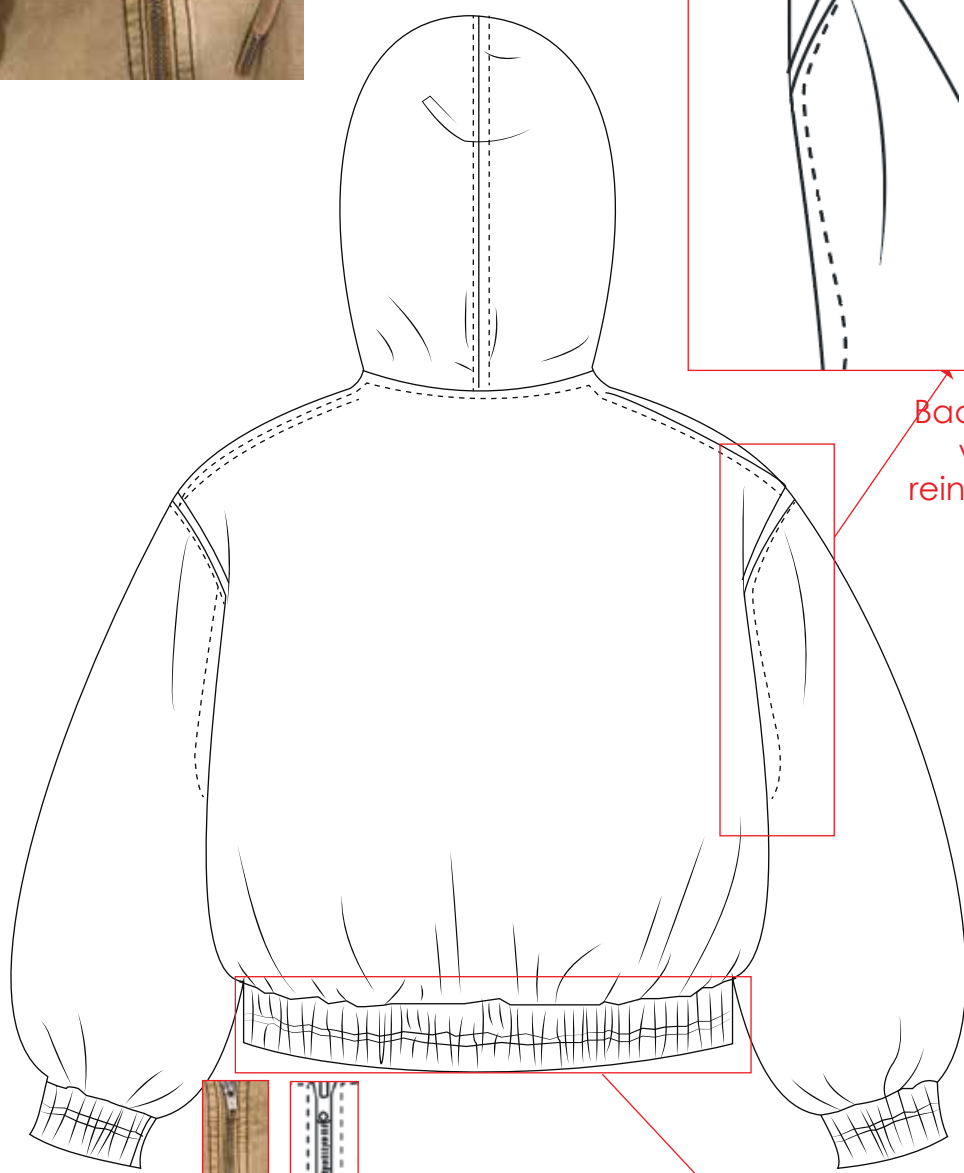
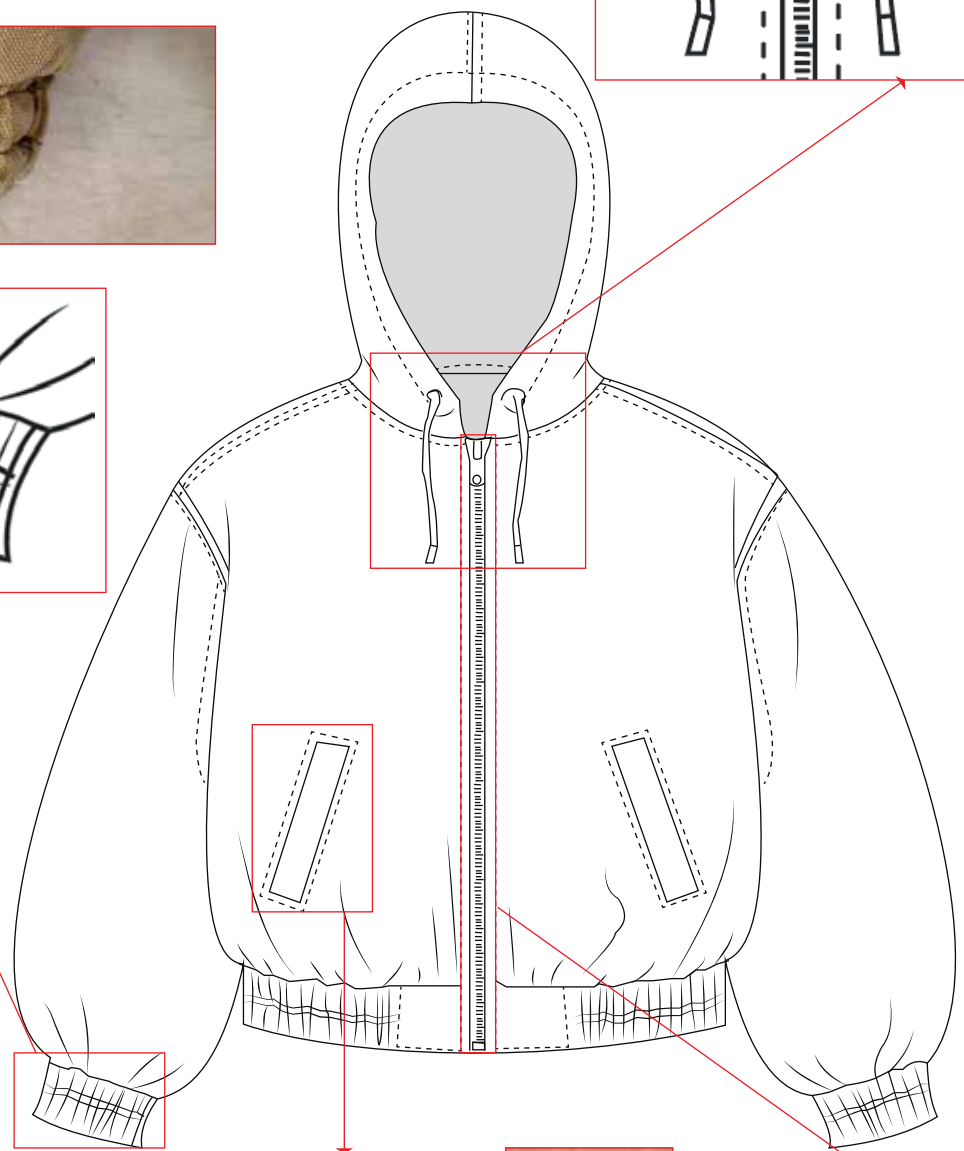
BILL OF MATERIALS									
DATE CREATED:04/23/26	MERCH NO:OJ-BMBR-001	DESCRIPTION:Cropped Hooded Bomber Jacket with Elastic Hem							
DATED MODIFY:04/23/26	SEASON:FW26	VENDOR:TBD							
STATUS:Development Sample		SAMPLE SIZE:S							
Comments:Development sample for FW26 focusing on tonal pattern exploration across core bomber silhouette. Consistent base fabric across all colorways with variation through print, wash, and surface texture. Hardware to remain consistent unless specified. Final approvals subject to lab dips and strike-offs.									
FABRIC									
				COLORWAYS					
FABRIC DESCRIPTION	CONTENT	WGT.	USAGE	COMBO 1	COMBO 2	COMBO 3	COMBO 4	COMBO 5	
Self Fabric - Cotton Twill (Shell)	100% Cotton	3/1 Twill, 240-280 GSM	Body, Sleeves, Hood	White / Undyed	Sand Beige + Vertical Stripe Print	Charcoal + Square Grid Pattern	Taupe Brown + Washed Texture	Brown + Abstract Camo Line Pattern	
Lining Fabric - Taffeta	100% Polyester	Plain Weave, 60-80 GSM	Full Lining (Body + Sleeve + Hood)	Off White	Light Sand	Dark Grey	Taupe	Brown	
Pocket Bag Fabric	Poly/Cotton Blend	Plain Weave, Lightweight	Pocket Bags	Off White	Beige	Grey	Taupe	Brown	
TRIM									
TRIM DESCRIPTION	CONTENT	WGT.	USAGE	COMBO 1	COMBO 2	COMBO 3	COMBO 4	COMBO 5	
CF Zipper	Nylon Coil	#5 Standard	Center Front Closure	Off White	Sand Beige	Black	Taupe Brown	Brown	
Waistband Elastic	Poly/Spandex	1.5-2" Elastic	Bottom Hem	Matching	Matching	Matching	Matching	Matching	
Cuff Elastic	Poly/Spandex	1" Elastic	Sleeve Opening	Matching	Matching	Matching	Matching	Matching	
Drawcord	Cotton	Round Cord	Hood	Matching	Matching	Matching	Matching	Matching	
Eyelets / Grommets	Metal	Standard Pressed	Hood Opening	Antique Brass	Antique Brass	Matte black	Antique Brass	Antique Brass	
Main Label	Woven	CB Neck (Inside Hood)	Black/White	Off Black/White	Off Black/White	Off Black/White	Off Black/White	Off Black/White	
LABELS & ATTACHMENTS									
LABEL NO	CONTENT	APPLICATION	PLACEMENT	COMBO 1	COMBO 2	COMBO 3	COMBO 4	COMBO 5	
1	Woven Label	Sewn	CB Neck	Black/White	Black/White	Black/White	Black/White	Matching	
2	Size Label	Sewn	Below Main Label	Standard	Standard	Standard	Standard	Standard	
3	Care Label	Sewn	Side Seam	Standard	Standard	Standard	Standard	Standard	
WASH INSTRUCTION									
GARMENT WASH	INGREDIENTS	TIME	USAGE						
Garment Wash (Light Fade)	Enzyme Wash	Standard Cycle	Soft Finish						

# CALL-OUTS

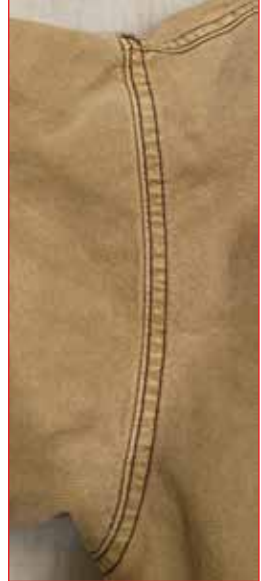
Hood opening with drawcord and metal eyelets, allowing adjustable fit around face opening.



Cuff hem with elasticated finish, gathered construction for snug fit at wrist.

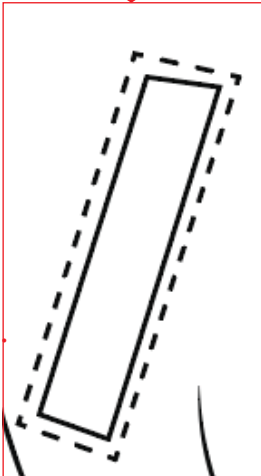


Back armhole seam detail with visible topstitch, reinforcing structure and fit.

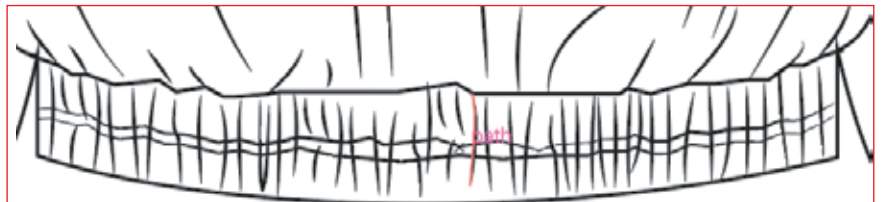
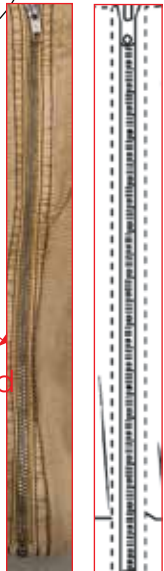


Waistband hem with elasticated channel, evenly distributed gathers for volume control.

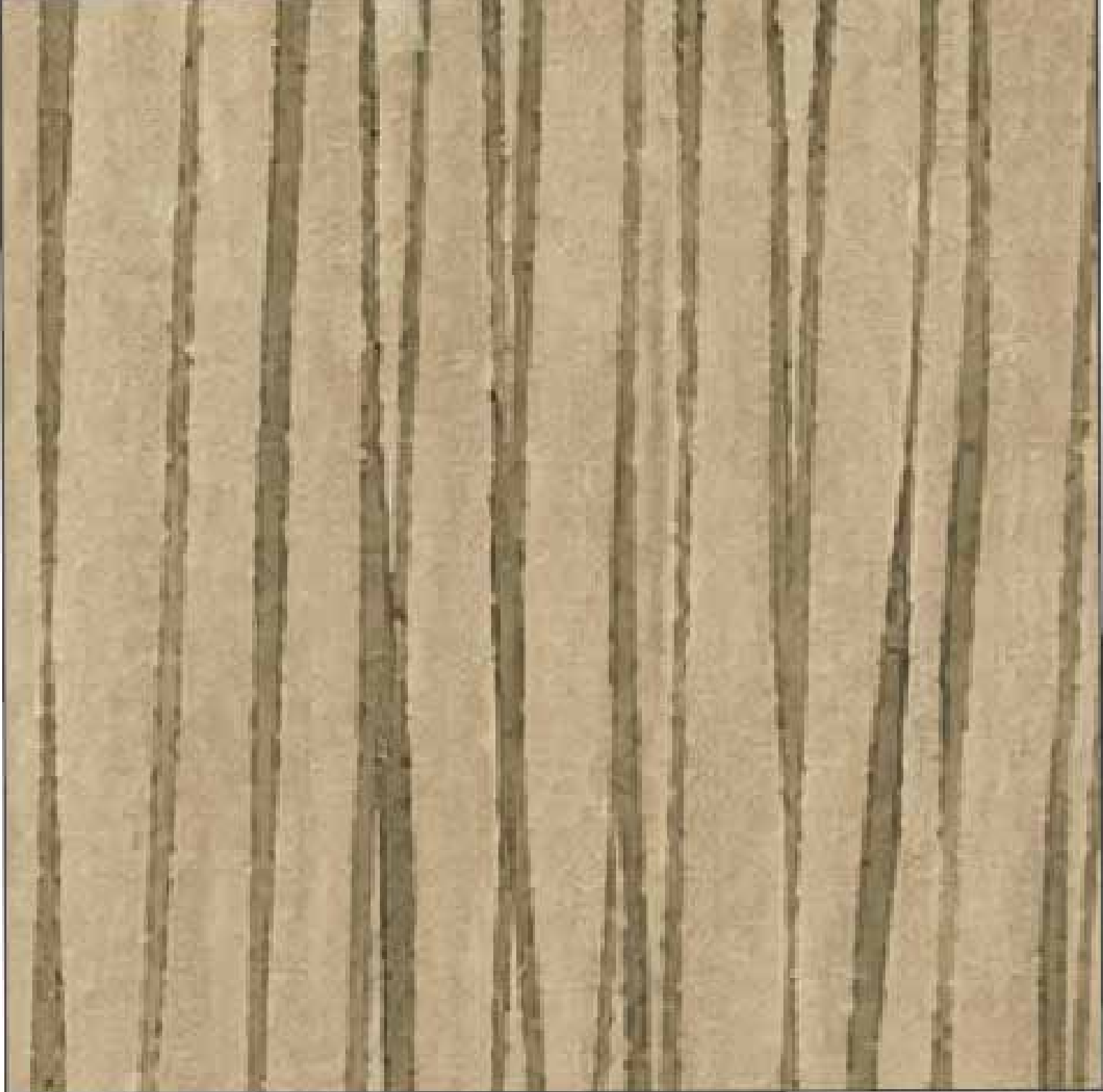
Front welt pocket with angled opening, clean finish with double topstitch detailing.



Center front zipper with exposed teeth and pull tab, integrated into a clean placket construction at the neckline.



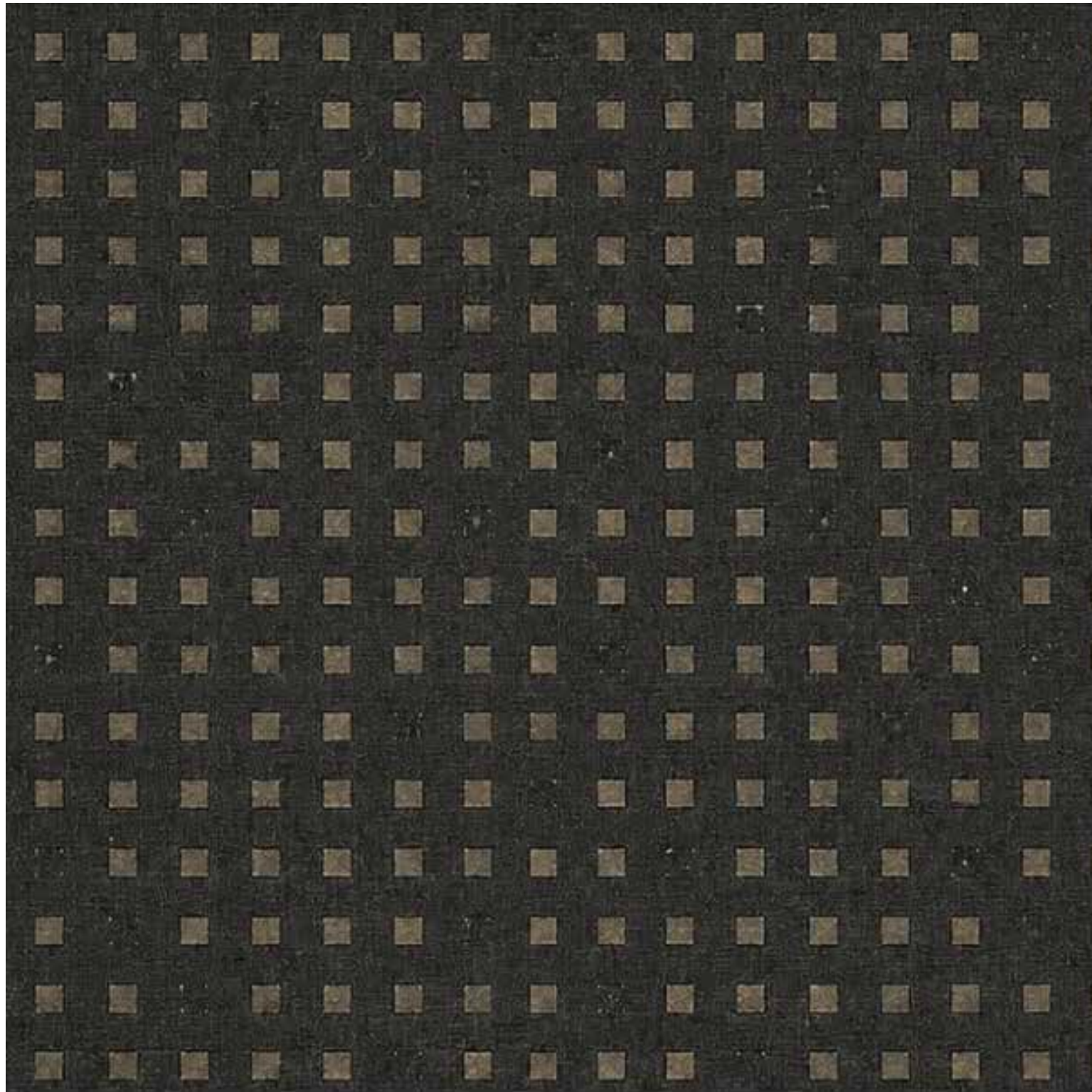
# FABRIC SWATCHES



**07.1 — Strata Line**  
70% Cotton, 30% Linen. Breathable with a slightly crisp structure that holds vertical form.



**07.2 — Erosion Surface**  
65% Viscose, 35% Polyester. Soft drape with a fluid fall and subtle surface depth.



**08.1 — Grid Void**

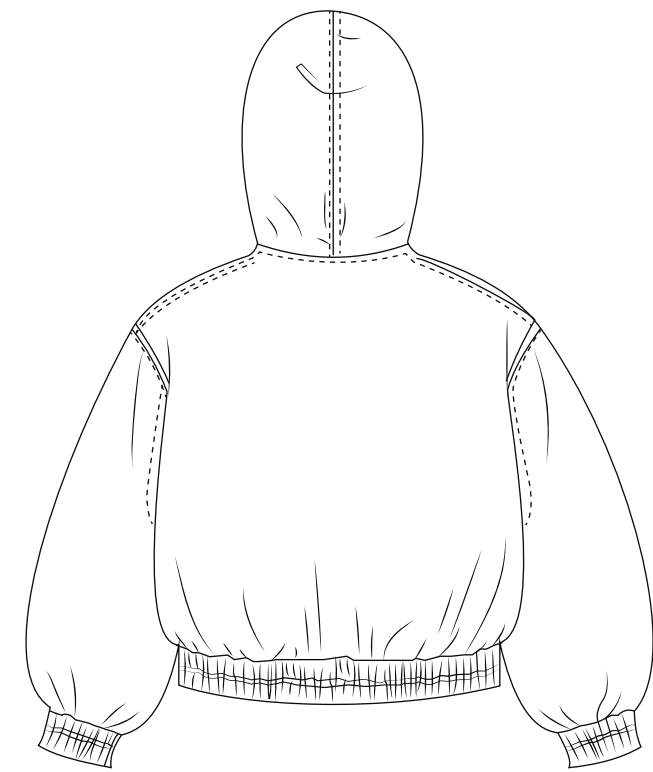
80% Polyester, 20% Cotton. Structured and durable with a firm hand and defined grid texture.



**08.2 — Fracture Map**

55% Linen, 45% Cotton. Natural, slightly coarse texture with a dry hand and visible irregularity.

# COLOR-WAYS



Style **01** – Raw Shell (White / Undyed)  
Price: \$130–150

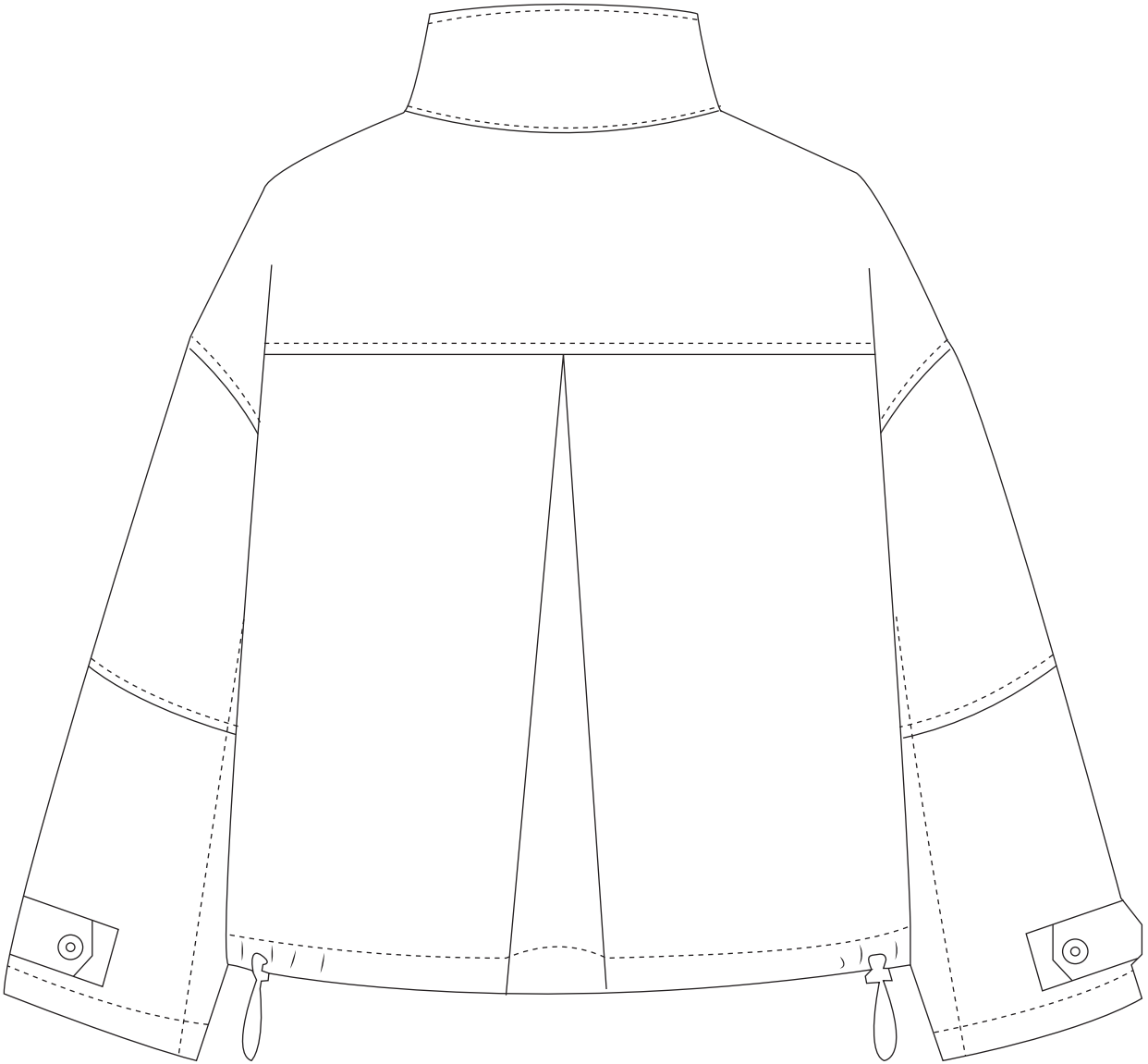
Style **02** – Sand Stripe  
(Vertical Stripe Beige)  
Price: \$155–175

Style **03** – Charcoal Grid  
(Dark Square Pattern)  
Price: \$165–185

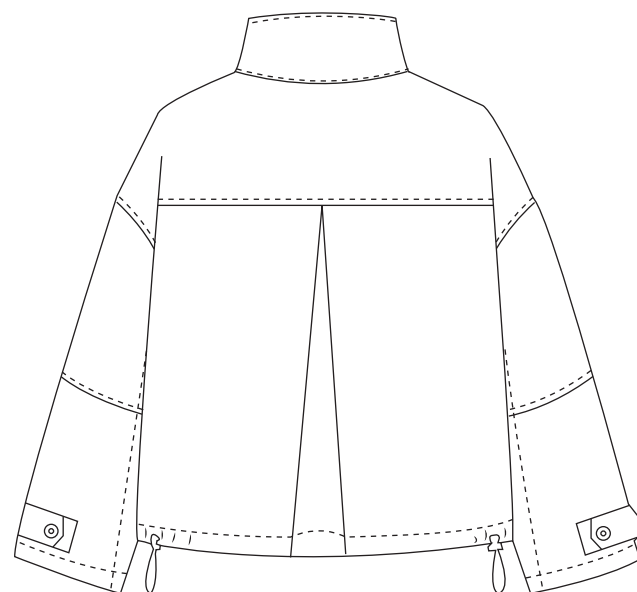
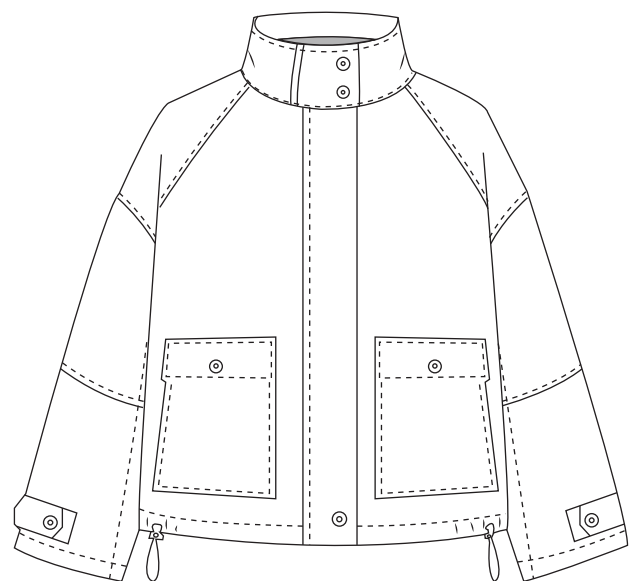
Style **04** – Washed Taupe  
(Textured Brown)  
Price: \$170–190

Style **05** – Fractured Brown  
(Camo Line Pattern)  
Price: \$175–195

# COLLECTION EXTENSION: NEW GARMENT FLATS



# COLLECTION EXTENSION: COLOR-WAYS



Style **01** – Raw Shell (White / Undyed)  
Price: \$130-150

Style **02** – Sand Stripe  
(Vertical Stripe Beige)  
Price: \$150-155

Style **03** – Fractured Brown  
(Camo Line Pattern)  
Price: \$180-200

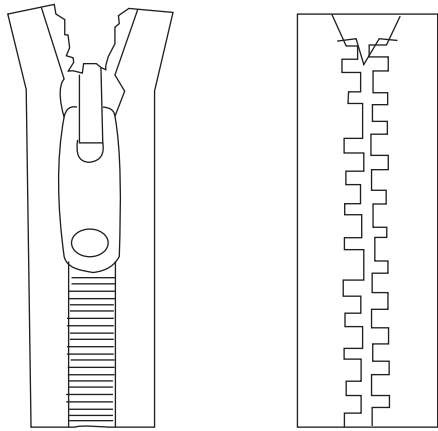
Style **04** – Charcoal Grid  
(Dark Square Pattern)  
Price: \$160-170

Style **05** – Washed Taupe  
(Textured Brown)  
Price: \$190-200

# TRIMS AND DETAILS

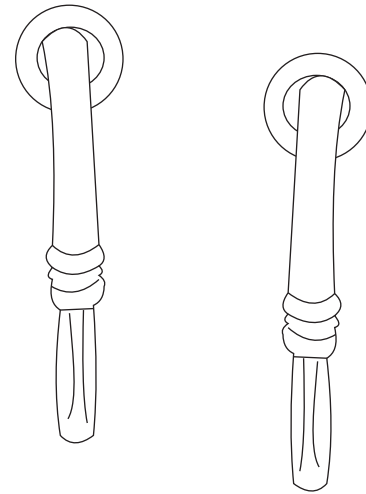
## HARDWARE AND CLOSURES

**CF ZIPPER**



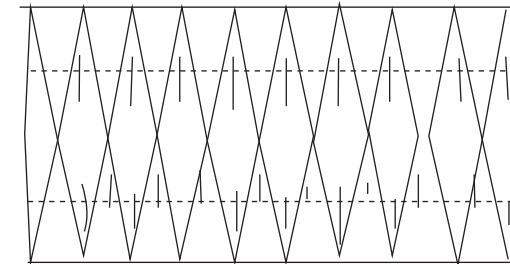
Center front metal zipper with exposed teeth. Antique brass finish.

**HOOD DRAWCORD**



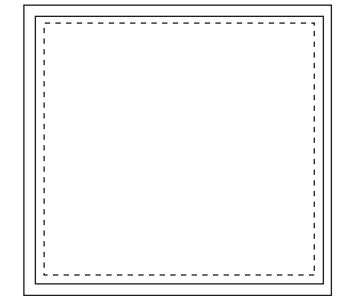
Cotton round drawcord with metal eyelets and metal aglets.

**ELASTIC (HEM & CUFFS)**



Encased elastic with multi-needle stitching for secure hold.

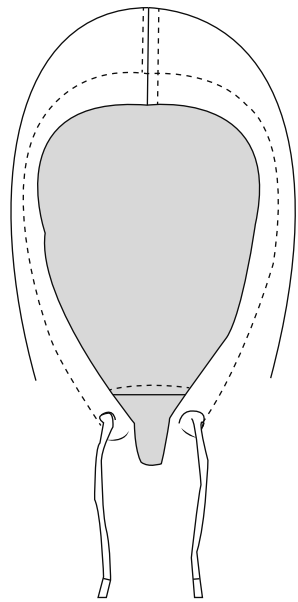
**WOVEN LABEL**



Woven branding label at neckline.

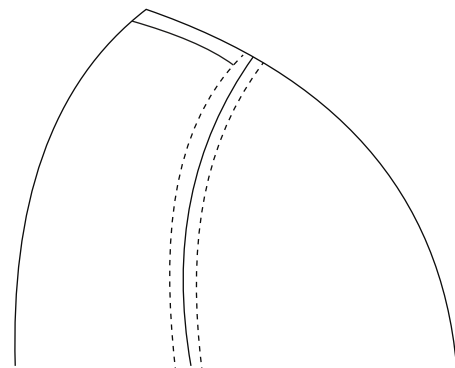
## CONSTRUCTION DETAILS

**HOOD CONSTRUCTION**



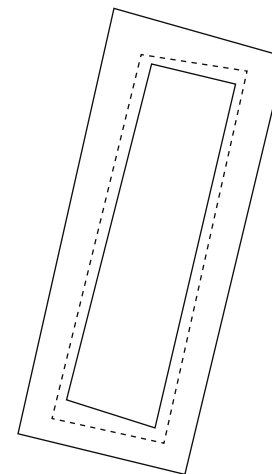
3-panel hood with center back seam and drawcord channel.

**ARMHOLE SEAM**



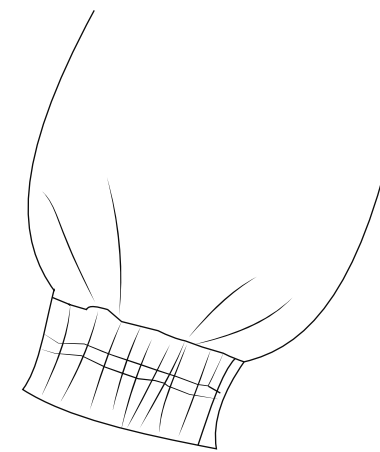
Double needle topstitch at armhole for strength and durability.

**FRONT WELT POCKETS**



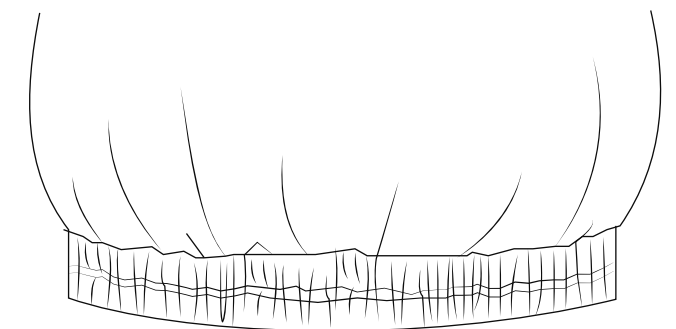
Welt pockets with clean finish and double topstitch detailing.

**CUFF CONSTRUCTION**



Elasticated cuff with gathered construction for snug fit.

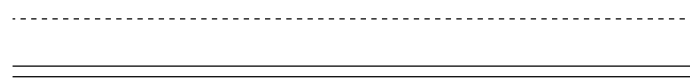
**WAISTBAND CONSTRUCTION**



Elasticated waistband with evenly distributed gathers for volume control.

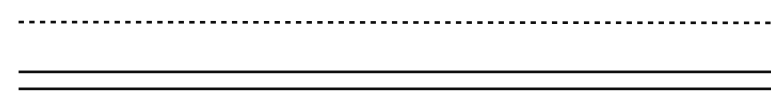
## STICHING DETAILS

**SINGLE NEEDLE TOPSTITCH**



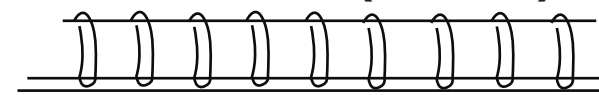
Standard single needle topstitch used on main seams and details.

**DOUBLE NEEDLE TOPSTITCH**



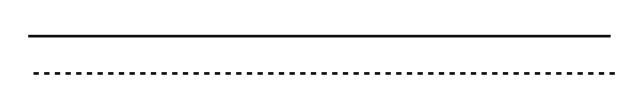
Double needle topstitch used on armhole, shoulder, pockets and seam details.

**COVERSTITCH (ELASTIC)**



Coverstitch used to attach elastic at hem and cuffs for stretch and strength.

**EDGE STITCH**



Clean edge stitch used along hood edge, pocket welts, hood edge and plackets.

# GARMENT PHOTOGRAPHS

