

OJASWINI GUPTA

NAME:	BUTTON DOWN SHIRT	DATE:	10/25/2025
STYLE #:	1	SIZE:	S M L XL
SEASON:	FALL 2025	DESIGNER:	OJASWINI GUPTA
FABRICATION:	60% Cotton, 40% Linen	COLOR:	BEIGE
DESCRIPTION:	Relaxed-fit long-sleeve shirt with vertical stripes, button placket, and chest pocket. Slightly dropped shoulders and a curved hem.	TRIM:	Plastic buttons, topstitched seams

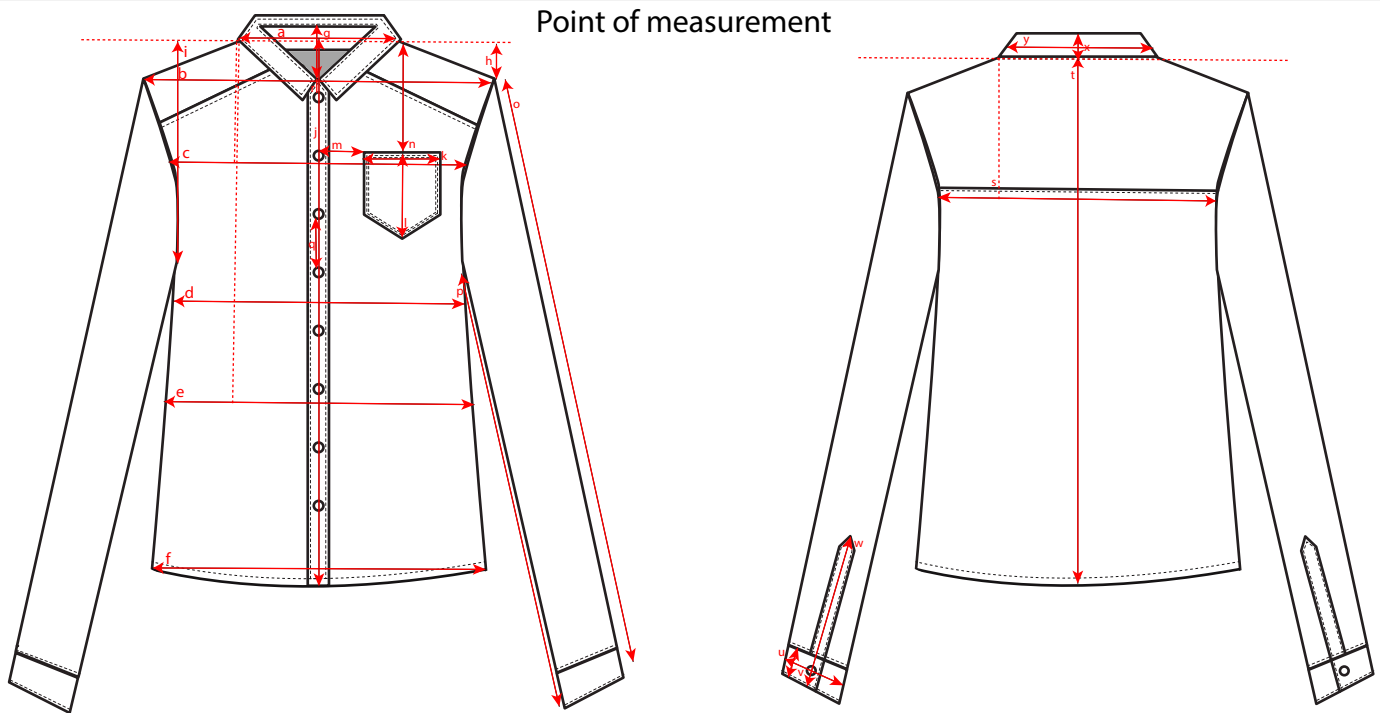
Garment



OJASWINI GUPTA

NAME:	BUTTON DOWN SHIRT	DATE:	10/25/2025
STYLE #:	1	SIZE:	S M L XL
SEASON:	FALL 2025	DESIGNER:	OJASWINI GUPTA
FABRICATION:	60% Cotton, 40% Linen	COLOR:	BEIGE
DESCRIPTION:	Relaxed-fit long-sleeve shirt with vertical stripes, button placket, and chest pocket. Slightly dropped shoulders and a curved hem.	TRIM:	Plastic buttons, topstitched seams

Garment



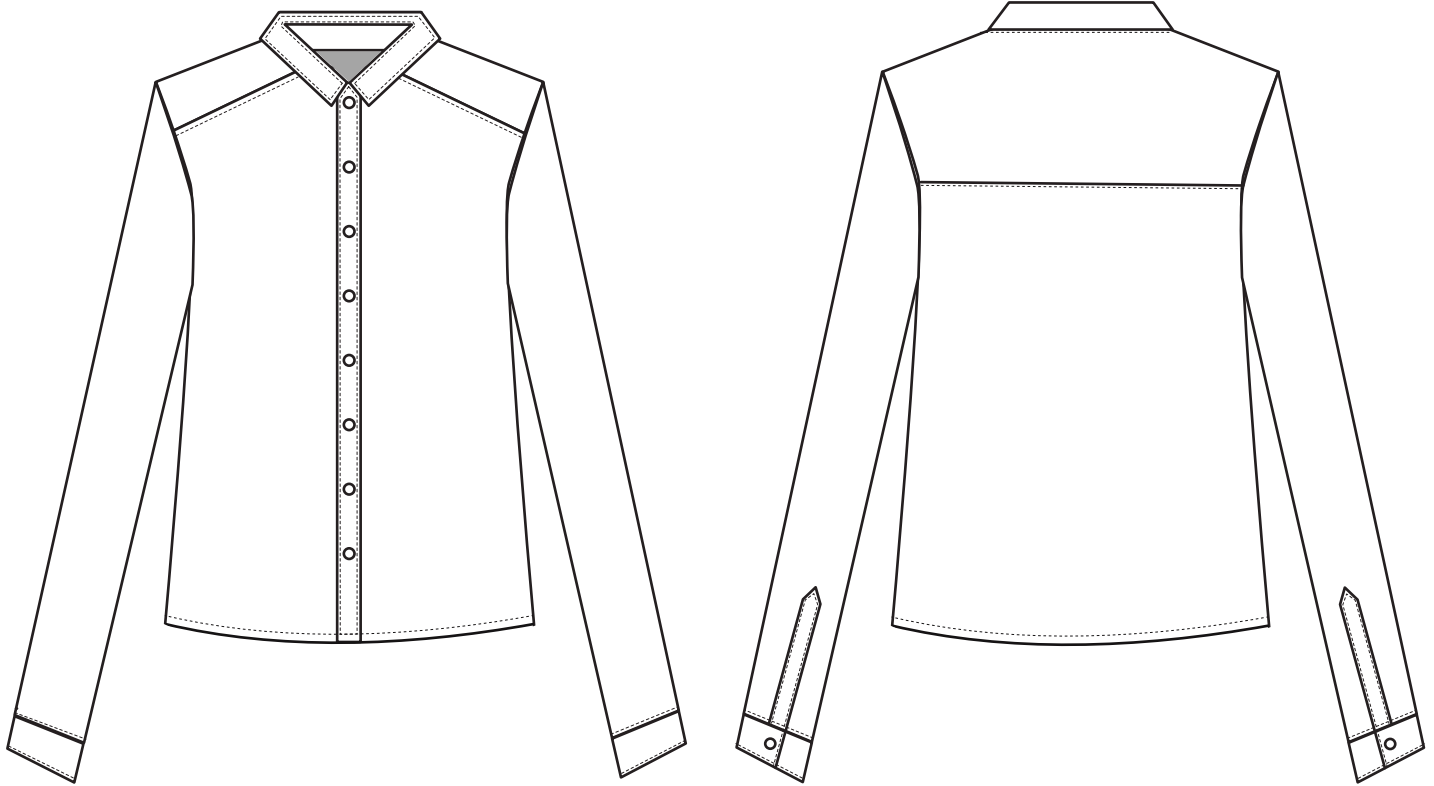
REF	DESCRIPTION	MEASUREMENTS
FRONT		
a	Neck Width - at HPS	9"
b	Shoulder to Shoulder (at Armhole)	23.5"
c	Across Front at 6" from HPS	17.5"
d	Chest at 1" from Armhole	24.7"
e	Across Waist at 16" from HPS	25"
f	Bottom Opening - Front	26"
g	Front Neck Drop at CF	4.5"
h	Shoulder Drop from HPS	6"
i	Armhole Drop from HPS	6.5"
j	Length at CF from HPS	9.5"
k	Pocket width	5.25"
l	Pocket Height	5.2"
m	Pocket position from CF	3"
n	Pocket position from HPS	9.5"
o	Sleeve length	24"
p	Sleeve length underarm	18.5"
q	Distance between buttons	3.5"
r	Distance to first button	5"
BACK		
s	Across Back at 6" from HPS	18"
t	Length at CB from HPS	27"
u	Sleeve cuff height	2.5"
v	Sleeve cuff width	10.2"
w	Sleeve placket height	5"
x	Collar height at central back	2"
y	Collar length at outer edge	19.7"

OJASWINI GUPTA

NAME:	BUTTON DOWN SHIRT	DATE:	10/25/2025
STYLE #:	1	SIZE:	S M L XL
SEASON:	FALL 2025	DESIGNER:	OJASWINI GUPTA
FABRICATION:	60% Cotton, 40% Linen	COLOR:	BEIGE
DESCRIPTION:	Relaxed-fit long-sleeve shirt with vertical stripes, button placket, and chest pocket. Slightly dropped shoulders and a curved hem.	TRIM:	Plastic buttons, topstitched seams

Garment

Bill of materials



DESCRIPTION	PLACEMENT	CONTENT	COLOR	QTY	SIZE/ WIDTH
FABRIC					
Cotton-Linen Blend	Body, Sleeves, Collar, Pocket	60% Cotton / 40% Linen	Pink / Green / Mustard / Navy	2.5 yds	58"/60"
Fusible Interlining	Collar, Collar Stand, Cuffs, Placket	Cotton/Poly Blend	White	0.5 yds	36"
TRIMS					
4-Hole Plastic Button	Front Placket & Cuffs	Plastic	Tonal	11 pcs	1 cm dia.
Sewing Thread	Whole Garment	100% Polyester	Matching color	1 spool	Tex 27
Woven Brand Label	Center Back Neck	Polyester	White w/ Black Text	1	2" x 0.5"
Care Label	Inner Side Seam	Satin Printed	White	1	2" x 4"
Hanger Loop	Back Yoke	Cotton Twill Tape	Beige	1	0.5 cm width
WASH INSTRUCTIONS					
PROCESS	INGREDIENTS	TIME	USAGE		
Machine Wash	Mild Detergent	Gentle Cycle	Cold Water, Line Dry		
Iron	Medium Heat	-	Avoid on Labels		
Dry Clean	Optional	-	Recommended for longevity		

OJASWINI GUPTA

NAME:	BUTTON DOWN SHIRT	DATE:	10/25/2025
STYLE #:	1	SIZE:	S M L XL
SEASON:	FALL 2025	DESIGNER:	OJASWINI GUPTA
FABRICATION:	60% Cotton, 40% Linen	COLOR:	BEIGE
DESCRIPTION:	Relaxed-fit long-sleeve shirt with vertical stripes, button placket, and chest pocket. Slightly dropped shoulders and a curved hem.	TRIM:	Plastic buttons, topstitched seams

Garment

Colorways

